

## Instructions for Mozilla's Firefox.

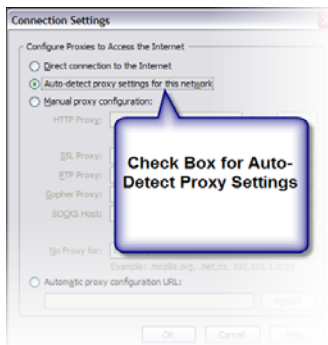
- 1) Go to tools and click on options.
- 2) Next click on the Advanced tab.
- 3) Click on the Network Tab.



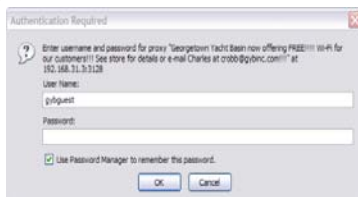
- 4) Click settings.



- 5) Check box for Auto-detect proxy settings for this network



- 6) Click OK and close Firefox. Re-open Firefox.
- 7) Enter Username and Password to Log On



If you have any trouble or questions, please email Charles at [crobb@gybinc.com](mailto:crobb@gybinc.com). You can also stop in the store and ask for Charles. He is available Monday-Friday from 8:15am until 4:30pm.